

4-H MARKET HOG SELECTION, GROOMING, AND SHOWMANSHIP

Cornell Cooperative Extension
Livingston County



PROSPECT MARKET HOG SELECTION



VIDEO:TIPS FOR SELECTING YOUR MARKET HOG



<https://youtu.be/bwztBFERx8Q>

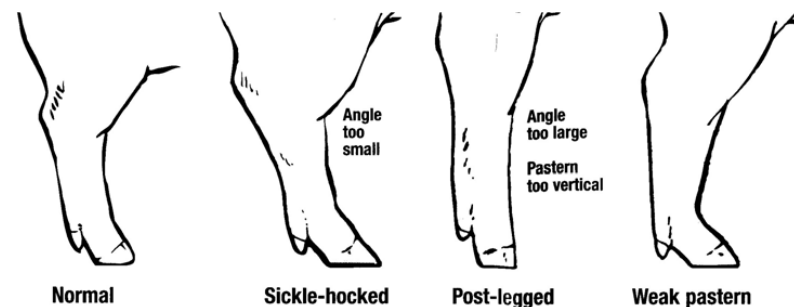
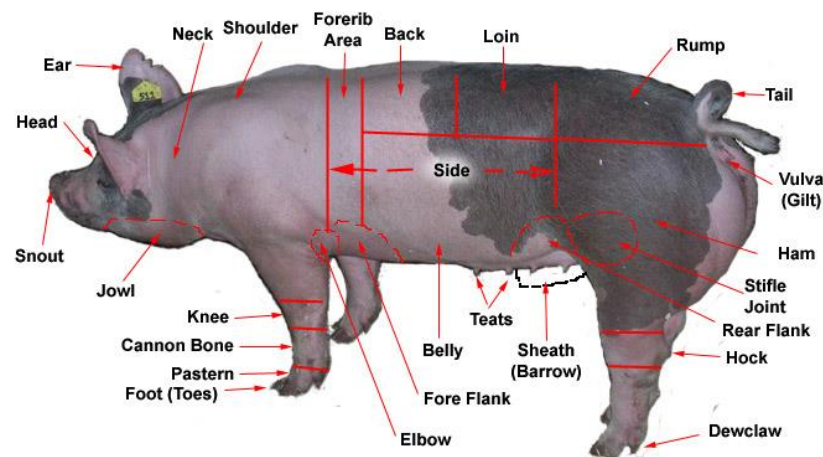
VIDEO: STRUCTURAL ISSUES



<https://youtu.be/Nvd4s7Q-Njl>

SELECTING YOUR MARKET HOG

- Depth of body
 - If too narrow/shallow it will not gain weight as quickly
 - Bad feed efficiency
- Structure
 - Toes should be even and square
 - Wide based when standing and when walking
 - Chest floor should be even with the flank
- Balance
 - Appealing to look at
 - Not too extreme in one aspect versus another
 - Level topped
 - No slope when looking from its tail to shoulders/neck
 - Moderately long body
- Muscle
 - Choose the one with moderate muscle (and good structure)
 - Too much at a young age will lead to structure issues later
 - As long as it's not too light muscled, the amount of muscling can be changed with feed



TRAINING/WALKING YOUR MARKET HOG



VIDEO: TRAINING YOUR PIG AND PRACTICING SHOWMANSHIP



<https://youtu.be/IDtxBXvO0JQ>

TIPS AND TRICKS

- Spend time with your pig before trying to walk it
- Stay calm and don't get frustrated
 - It won't go perfect the first time
- Your pig will run the first time it comes out of the barn
 - Tapping at the top of its head, in between its eyes will make him/her slow down
 - Don't sprint after your pig
 - Eventually they will stop running, it may take a while but they will stop
- Try and walk your pig at least once per day starting 90 days from the show
 - Twice per day is even better but once will be better than not at all
- Walking should be associated with a positive experience
 - Reward them by cooling them off with the hose





FITTING AND SHOWMANSHIP

***SALE DAY FITTING FOR ALL SALE ANIMALS WILL BE LIMITED TO WASHING AND BLOW DRYING THE COAT. USE OF ADHESIVES WILL BE PROHIBITED.**

VIDEO: CLIPPING YOUR PIG FOR THE SHOW



<https://youtu.be/IsEpS-RNNqY>

VIDEO: CLIPPING PART 2



<https://youtu.be/TQltBZug9nE>

FITTING TIPS AND TRICKS

- If possible, clip while you are at home
 - Gives the hair a chance to grow back a little and look “natural”
 - If your pig isn’t cooperating you can give them a break and start again later (or the next day)
- Be patient
 - Clipping while they are eating will keep them occupied
- If you are going to slick shear your pig, be sure to do it at least 2 weeks before the show
- There are several products available to make your pig shine
 - Avoid anything oil based (such as baby oil). It will hold their body heat in
 - Check the rules for each show, some may not allow the use of sprays
 - Water is always a good substitute

VIDEO: SHOWMANSHIP



https://youtu.be/Bbhez_qS2Is

SHOWMANSHIP TIPS AND TRICKS

- If you enter the ring from a pen, always close the gate behind you
- When entering the ring...
 - Drive your pig straight at the judge until you are about 6 feet away (this will give the judge a front view)
 - Then turn your pig to give the judge a side view
 - After all of the exhibitors have entered the ring bring your pig back around and walk the pig away from the judge to give a rear view
- Always keep the pig in between you and the judge
- Keep your eyes on the judge but be aware of what's going on around you
- Practice your showmanship at home!
- Be prepared for questions. You should know:
 - Weight, breed, ear notches, general knowledge about your pig, what you like and dislike about your pig, and cuts of meat (where they are located)

HELPFUL REFERENCES

- Market Auction Rules
 - <http://ccelivingstoncounty.org/resources/1920-auction-sale-rules>
- NYS 4-H (Swine)
 - <http://4h.ansci.cornell.edu/animal-programs/swine/>
- Ohio State University Swine Resources
 - <http://porkinfo.osu.edu/>
- Ohio State University Extension Livestock Resources
 - <http://www.ohio4h.org/statewide-programs/animal-sciences/livestock/livestock-resources>

SUCCESS

is totally dependent on your

DRIVE.



- Don't forget to fill out the educational requirement paperwork!
- If you have any further questions please contact Mark Wittmeyer
 - mjw16@cornell.edu | 585-991-5420 | 585-335-1752