

# 4-H MARKET LAMB SELECTION, GROOMING, & SHOWMANSHIP



**Cornell Cooperative Extension**  
**Livingston County**



---

# MARKET LAMB SELECTION

IT'S NOT ABOUT HOW MUCH YOU  
WANT IT.

IT'S ABOUT HOW HARD  
YOU'RE WILLING TO  
**WORK**  
*for it.*

## VIDEO: SELECTING YOUR MARKET LAMB



[https://youtu.be/kzy0\\_R7CMUw](https://youtu.be/kzy0_R7CMUw)

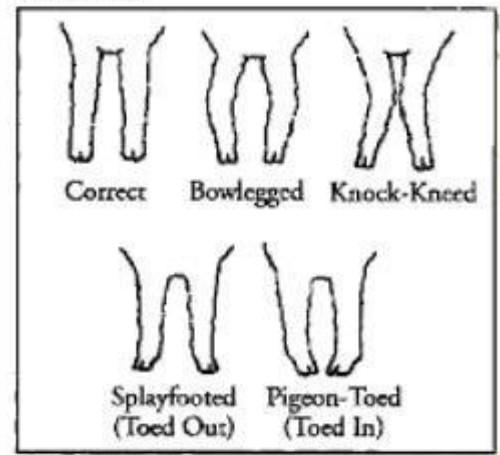
## VIDEO: JUDGING LAMBS ON THE MOVE



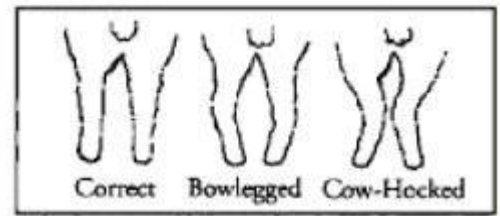
<https://youtu.be/36aOUxDInfQ>

# Leg Descriptions and Illustrations

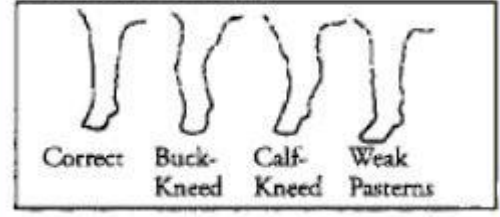
## Front View



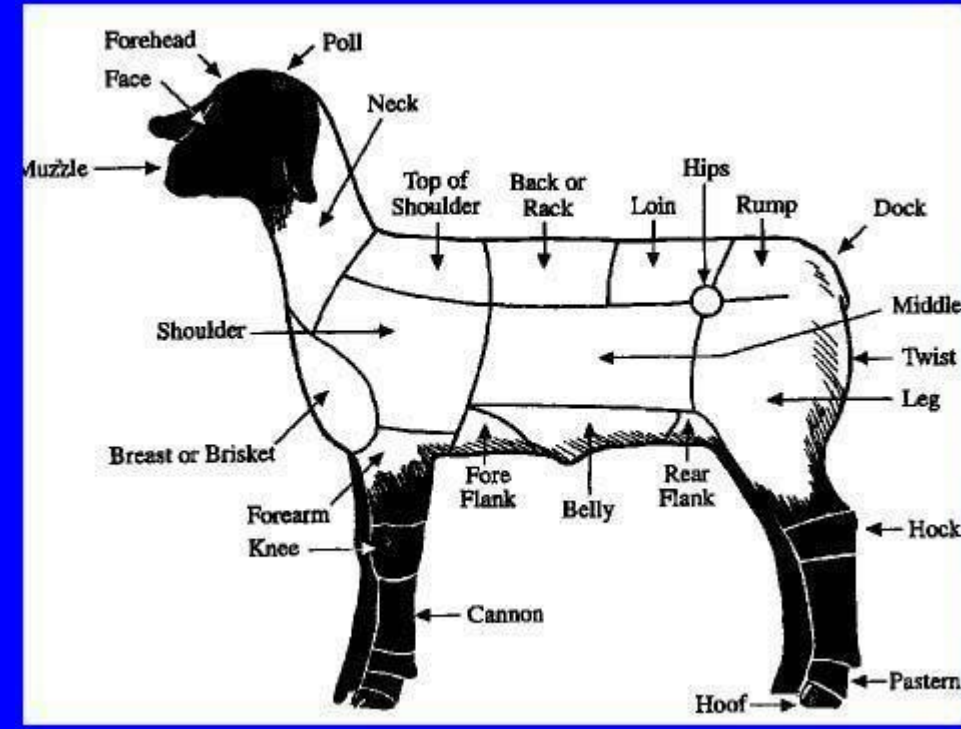
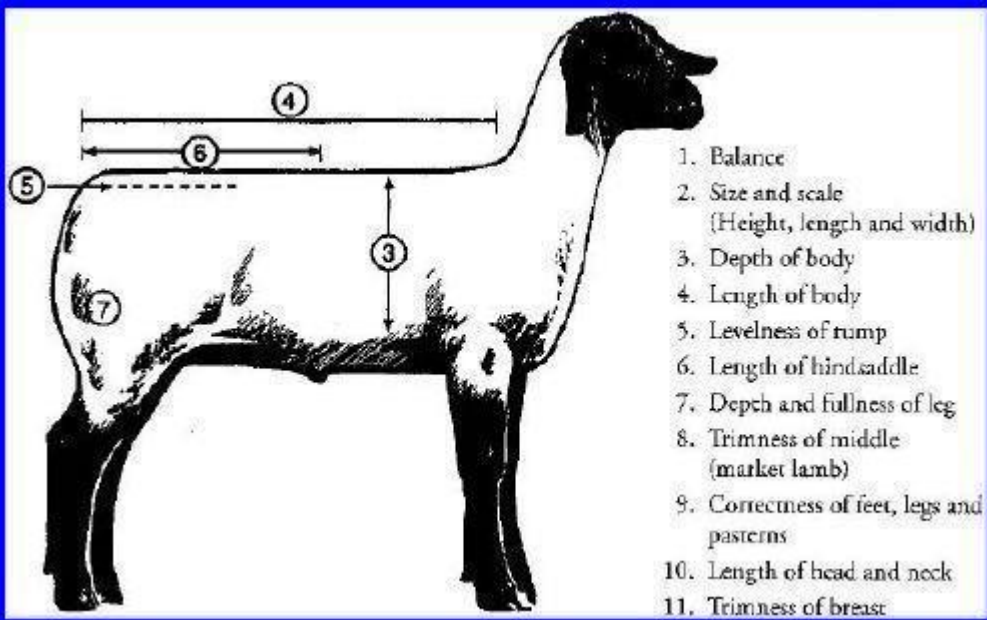
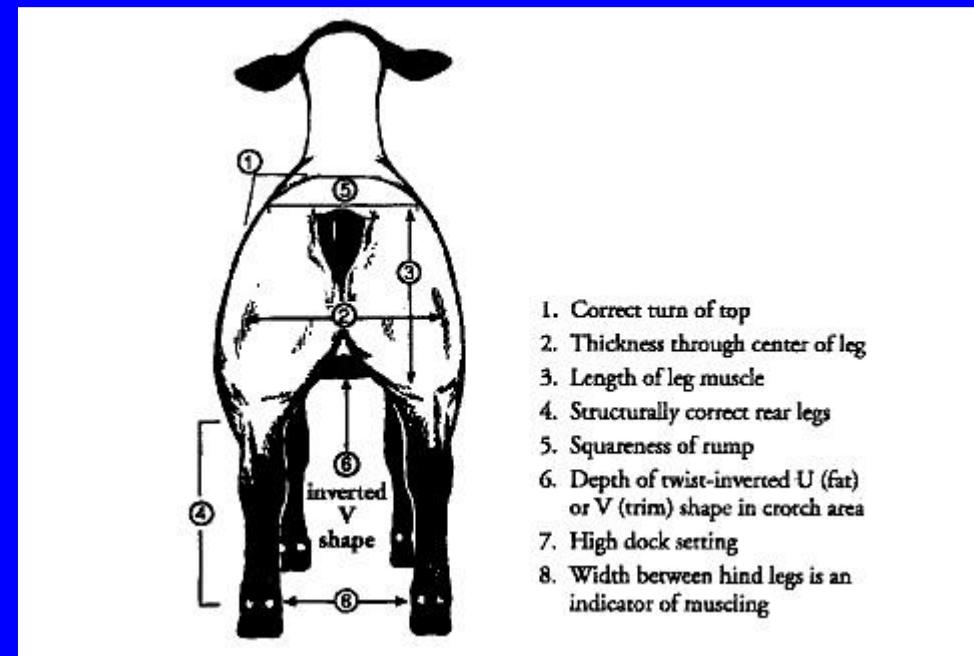
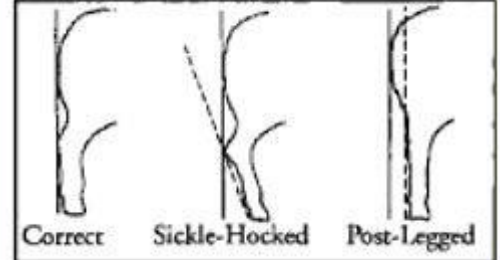
## Rear View



## Side View, Front Legs



## Side View, Rear Legs

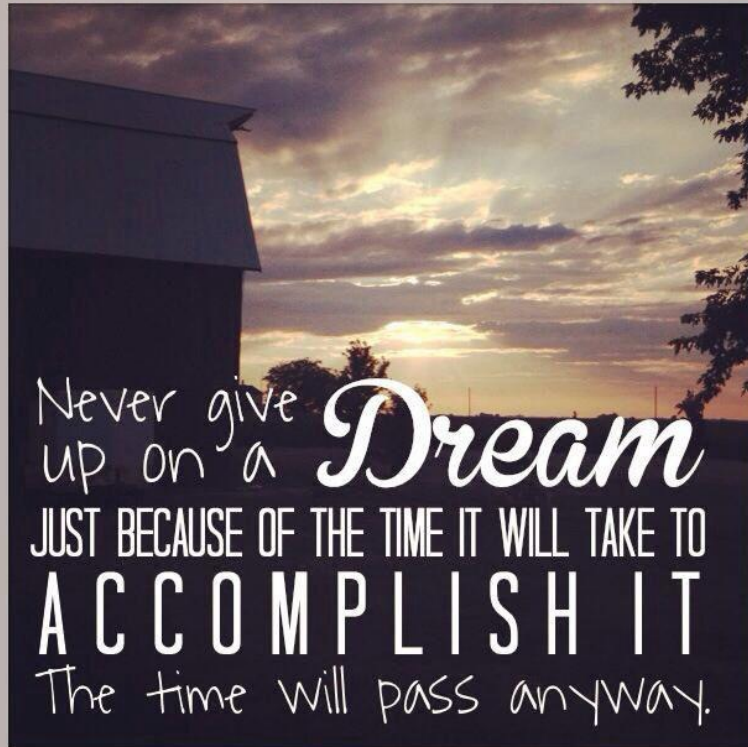


## TIPS AND TRICKS

- If the lamb has structure issues now, it will have bigger issues when it is older
- Handle the lamb. Don't try to judge muscle without feeling the muscle
  - Loin should have depth and thickness
  - Fullness and length through the rump
  - Full and muscular leg
- Their hock should be flexible with a strong pastern
- The lamb should be wide and smooth across their top with a long loin
- When looking down their top, the hips should be wider than the shoulders
- When walking they should remain wide based and square
- Lambs that are large framed, long bodied, long necked, and have a thick/long loin show the most potential for growth

---

# TRAINING YOUR MARKET LAMB



## VIDEO: TRAINING YOUR LAMB



<https://youtu.be/N7DpPSiAiSU>



# VIDEO: TEACHING YOUR LAMB TO BRACE

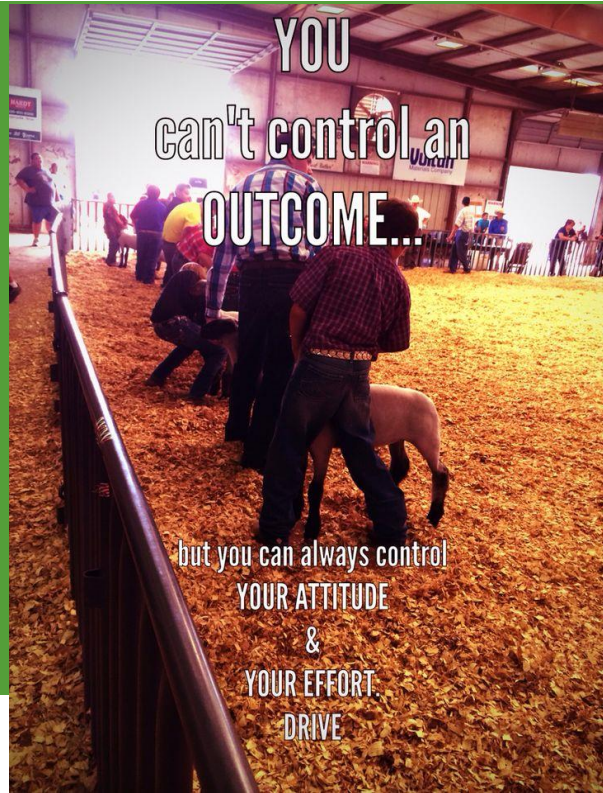


<https://youtu.be/ktNSgGf34KU>

## TIPS AND TRICKS

- Let your lamb get used to their new environment before trying to work with it
  - You can still try to get your lamb friendly, but don't try to lead him/her yet
- If you choose to tie your lamb up, put their head in the same position it would be in if you were showing him/her
  - Tying their head up helps getting them used to having their head restrained
  - It will also make training them a little easier
  - But, NEVER leave your lamb unattended when tied up
- If using a halter, be sure to put the halter on properly
- When leading your lamb, always keep their head up
- Practice setting feet and bracing
- Don't wait to start training. It is much easier to train a younger, smaller animal
- Stay consistent and continue to work with your lamb a couple times a week until your show
- Be patient! Give them time to learn what you want them to do

# SHEARING AND FITTING FOR THE SHOW



YOU  
can't control an  
OUTCOME...

but you can always control  
YOUR ATTITUDE  
&  
YOUR EFFORT.  
DRIVE

## VIDEO: PROPER WASHING TECHNIQUES



<https://youtu.be/9MbMJ0MhAR8>

## VIDEO: WASHING- PART 2



[https://youtu.be/EefEbXh0\\_Oo](https://youtu.be/EefEbXh0_Oo)

## TIPS AND TRICKS

- Don't leave the wash rack with a dirty lamb!
- Avoid getting water in their ears
- Using a simple conditioner will make shearing easier
- When towel drying your lambs, don't rub in circles, use firm pressure from front to back
- Shearing your lamb about 2 weeks prior to the show will make show day washing much easier

## VIDEO: SHEARING PART I



[https://youtu.be/QQ3ppJ\\_eSdk](https://youtu.be/QQ3ppJ_eSdk)

## VIDEO: SHEARING PART 2- THE DIFFICULT SPOTS



<https://youtu.be/hAtGwiFU7QQ>



# TIPS AND TRICKS

- Use long, fluid strokes
- Start with the front legs and go up the front shoulders and neck
  - Work bottom to top
- Start at the front shoulders and work your way to the back end
  - Shear in one direction
  - If the wool is growing in a few different directions you may have to go back and shear in the opposite direction
- Don't shear the entire hock. Leave the bottom half (from the knee/elbow down)
- Keep the hide pulled tight
- Make sure your clipper blades are sharp
- When clipping the bottom half of the hock:
  - Clip straight down
  - It should have a square look
  - The inside of the leg should be clipped a little closer to make the lamb look wider based

# SHOWMANSHIP



## VIDEO: SHOWMANSHIP



<https://youtu.be/PF5ImSmbtKc>

# TIPS AND TRICKS

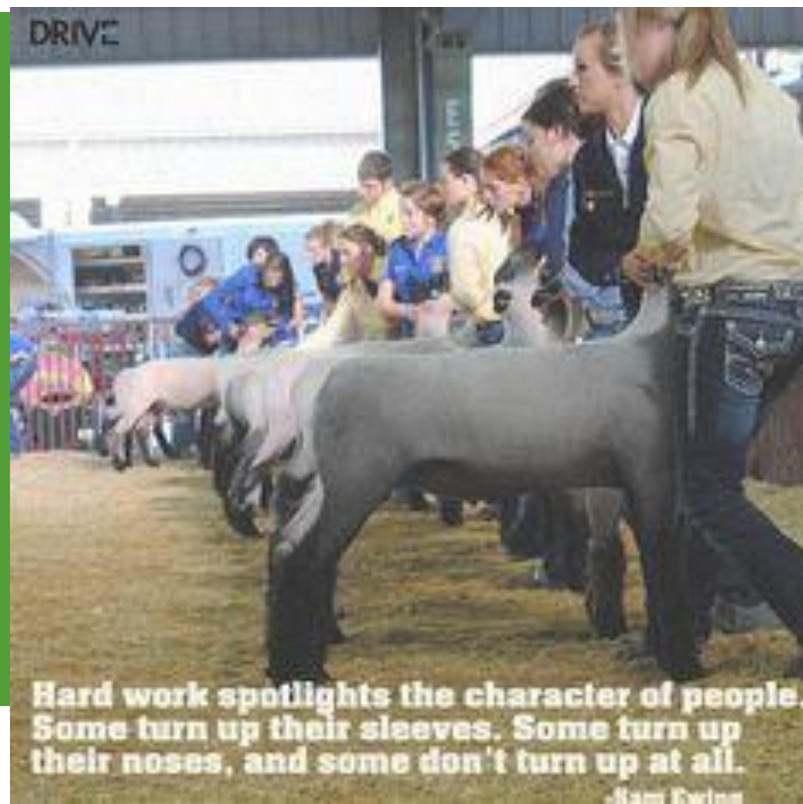
- Hold the head with the neck perpendicular to the back, and the nose slightly above level
  - Hold the neck and the head, not the ears
- Don't crowd the person next to you when lining up
- Setting the legs
  - Set the show side first
  - Shoulder width apart and square
  - Back legs should be slightly behind the hips
- Properly brace your lamb
  - The lambs back should be level and smooth
  - Bracing too much will make your lamb have a break in their hip loin junction
  - Practice bracing at home
- Look at your lamb when you are setting him/her up, if it doesn't look good, change it!
- Know the "show style" of the region you are showing in
- Keep your eye on the judge, but be aware of what your lamb is doing and your surroundings

## VIDEO: HANDLING- WHAT NOT TO DO



[https://youtu.be/XyT9EBZq5\\_0](https://youtu.be/XyT9EBZq5_0)

# JUDGING A FINISHED MARKET LAMB



**Hard work spotlights the character of people. Some turn up their sleeves. Some turn up their noses, and some don't turn up at all.**

-Sam Ewing

## VIDEO: JUDGING MUSCLE



<https://youtu.be/nNurVkl0EPc>

# HELPFUL REFERENCES

- Market Auction Rules
  - <http://ccelivingstoncounty.org/resources/1920-auction-sale-rules>
- NYS 4-H (Sheep)
  - <http://4h.ansci.cornell.edu/animal-programs/sheep/>
- Ohio State University Sheep Team
  - <http://sheep.osu.edu/>
- Ohio State University Extension Livestock Resources
  - <http://www.ohio4h.org/statewide-programs/animal-sciences/livestock/livestock-resources>





- Don't forget to fill out the educational requirement paperwork!
- If you have any further questions please contact Mark Wittmeyer
  - [mjw16@cornell.edu](mailto:mjw16@cornell.edu) | 585-991-5420 | 585-335-1752